

Schools and Mental Health Agencies:



**Working Together to
Improve Opportunities
for Youth**

The SBI Collaborative: Background

- Fall 2004: Community consultations in the Northeast by the Ministry of Children and Youth Services identified school-based intervention programming as a priority.
- 3 multi-service children's agencies and 4 School Boards within North & South Cochrane and Temiskaming districts collaborate to develop school-based primary prevention programs for students and families.



The SBI Collaborative:

Partnering CFS Agencies and School Boards

- Child and Family Services d of Timmins and District
- Timiskaming Child and Family Services
- Jeanne Sauvé Family Services



- District School Board Ontario North East
- Northeastern Catholic District School Board
- Conseil scolaire publique du Nord-Est de l'Ontario
- Conseil scolaire catholique de district des Grandes Rivières

The SBI Collaborative: A Clear Mission and A Vital Role

- Collaboration to develop & implement primary prevention programs for students and their families.
- Anticipated positive outcomes:
 - ✓ enhanced social, emotional, moral and behavioural development of students;
 - ✓ enhanced educational experiences; and,
 - ✓ improved well-being of students and their families.

The SBI Collaborative: A Clear Mission and A Vital Role

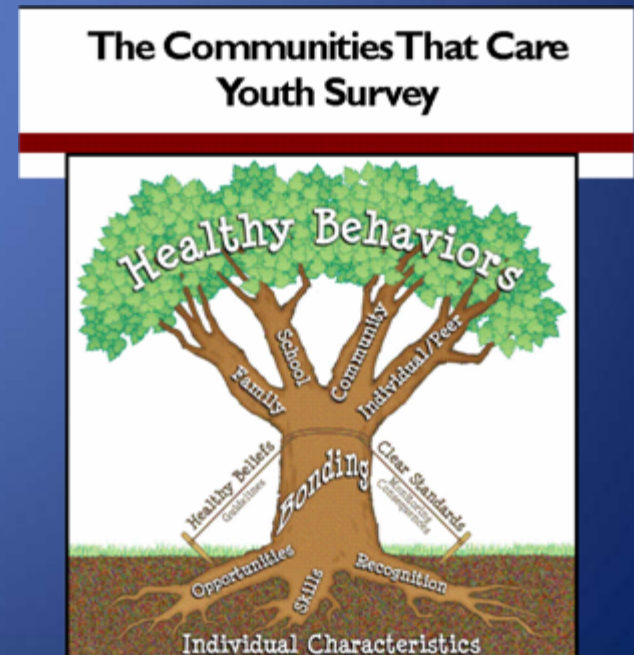
- A common approach to service delivery with the outcome of enhancing pro-social behaviours in students.



- The benefit is the reduction of risk factors (i.e. substance abuse, violent behaviour, truancy) and the increase in protective factors (i.e. positive attitude towards school, improved communication skills & relationships, increased community involvement.)

Preliminary Achievements: CTC Youth Survey

- February – March 2006: Needs assessment conducted using Communities That Care (CTC) Youth Survey.
- Prioritized risk & protective factors to be addressed in the school environments .
- Conducted resource assessment of existing programs and service providers addressing the prioritized factors.



About the CTC Youth Survey...



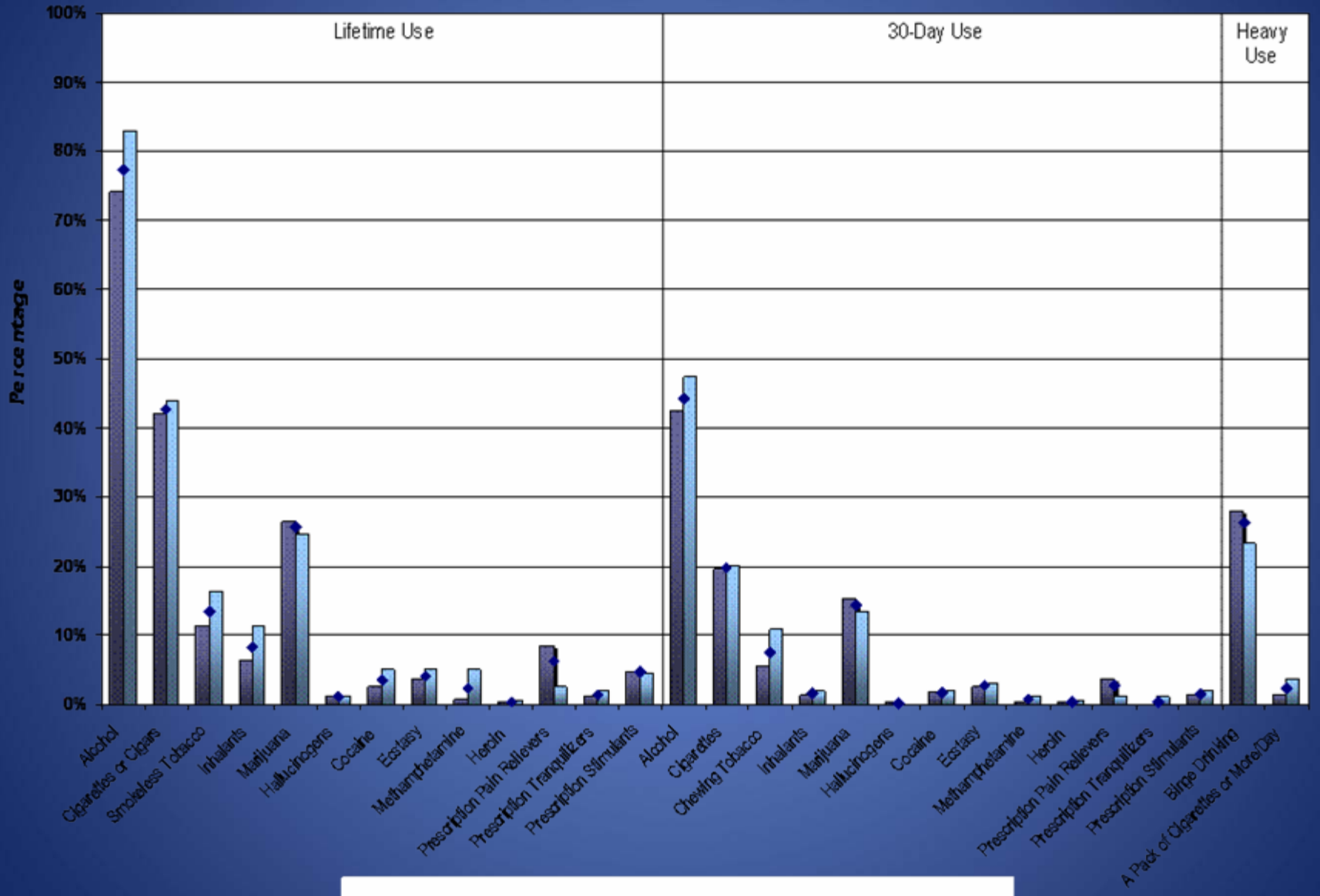
- Created at University of Washington.
- Assesses risk & protective factors.
- Administered in February-March 2006 to a randomly selected sample of 3,387 students (30% of total student population) in grades 6 through 12.

About the CTC Youth Survey...

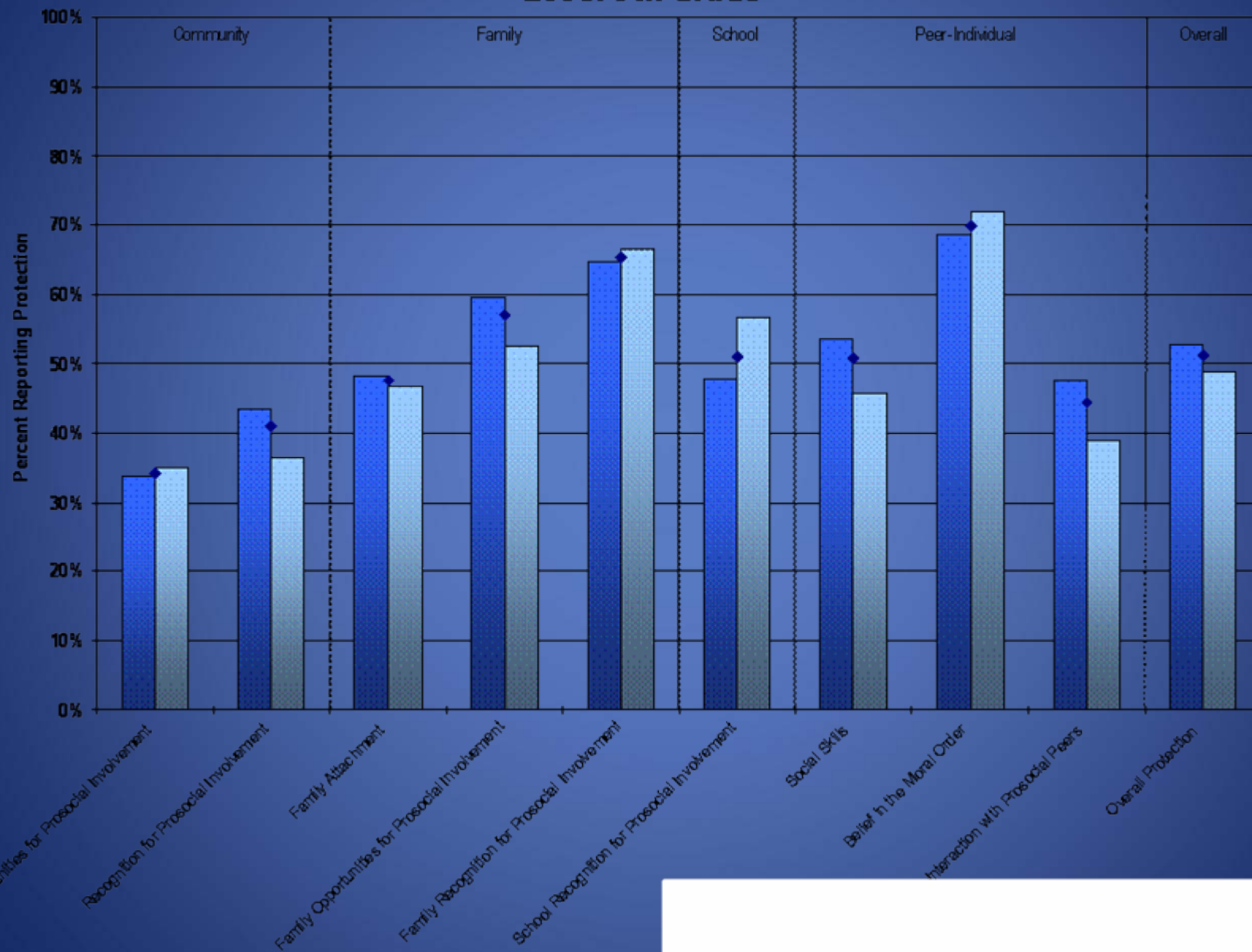


- Results helped identify criteria to guide the selection of evidence-based programs to reach positive outcomes for students.

Timmins, Combined Substance Use 9th Grade: 2006



Timmins, Combined Protective Profile 2006: 9th Grade



Program Selection

- Explore & identify evidence-based programs:
 - Evidence-based programs (EBPs)
 - SAMHSA's *National Registry of Evidence-based Programs and Practices* (NREPP)
 - *Communities That Care Prevention Strategies: A Research Guide to what Works*
 - *Blueprints for Violence Prevention*
 - Criteria for choice of EBPs in School-Based Initiative:
 - Involve school and family
 - Use universal (and possibly also selective or indicated) programs
 - Anti-social behaviour & substance abuse-related risk and protective factors

Selection & Implementation of Evidence-based Programs

- Criteria for selecting evidence-based programs:
 - Cost/benefit
 - Availability of training (Train-the-Trainer)
 - Local capacity to effectively implement program
 - Compatibility with identified needs related to risk and protective factors
 - Feasibility of translating program materials into French
 - Selected “Lions Quest”



LIONS QUEST



A Program of Lions
Clubs International
Foundation

It's time to....

ENERGIZE!



Achievements of the Collaborative: Lions Quest SFA Pilot Project

- Lions Quest Skills for Adolescence Program selected as a common evidence-based program to be implemented at grade 7 level in selected schools in 2007/8 school year.
- Collaborative partners have the commitment to expand programming in subsequent years.
- Partners overcame service delivery barriers between Children's Service Agencies and Education.

About the Lions Quest Skills for Adolescence Program

- Based on research of students in grades 6-8.
- Includes:
 - ✓ interactive, student-focused lessons;
 - ✓ sessions on anger, conflict, and stress management;
 - ✓ cross-curricular activities to encourage team-teaching.



Benefits of the Lions Quest SFA Program and Pilot Project

- Provides objective data for all Collaborative partners.
- Allows Collaborative partners to maximize & share resources (personnel & financial).
- Increase knowledge & capacity of Collaborative partners to address development & needs of children & families.

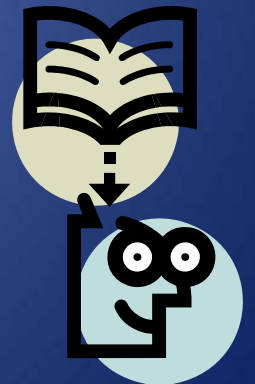
Benefits of the Lions Quest SFA Program and Pilot Project

- Capitalize on wealth of knowledge and expertise from different partners.
- Unified response to address identified needs for children, youth & families across the districts.
- First implementation with evaluation in Northeastern Ontario



Lions Quest Pilot Study

- Program implemented in 8 experiment classes across the 3 districts, starting in November 2007
- 8 comparison classes (control group) also selected
- Criteria for the selection of control group:
 - Language
 - Geography



Lions Quest Pilot Study

- Pre & Post-Tests
 - Checklist of Risk Behaviours in Youth (Armstrong, 2005)
 - Self-Perception Profile for Children (Harter, 1985)
 - Rosenberg Self-Esteem Scale



- Implementation Fidelity Checklists
- Service Delivery Data

Benefits of the Lions Quest SFA Program and Pilot Project

“When my grade 7 class heard that they would be taking part in the Lions Quest Program they were very excited to get started. Throughout the units, the students have been interacting more respectfully with one another and are more willing to listen to each other's ideas. Lion's Quest has had nothing but a positive impact on the students in my class.”

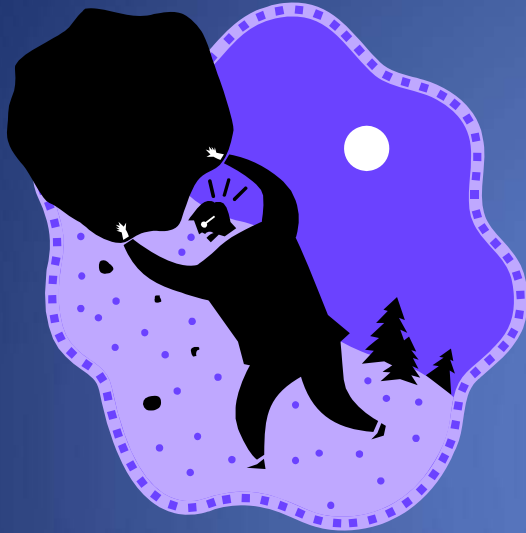
-- Erica Burkett, Teacher
Englehart Public School

Challenges and Lessons Learned

- Building trust in the new initiative
- Collaborative Committee representation
 - Commitment of partners
 - Appropriate role & function within respective organizations
 - Need to appoint “operational” reps.
 - Staffing changes & teacher re-assignments
- Communication



Challenges and Lessons Learned



- Availability of French-language resources and Francophone trainer
 - Parent engagement
 - Training – Geography; Costs
-
- Lack of participation in initial phase of pilot study by one school board
 - Evaluation tool administration errors
 - Sharing of leadership functions

Critical Success Factors of the Initiative

- Commitment at Senior Management level
- Expertise – U of Ottawa, U of Washington, personnel from respective Organizations
- Universality of programming
- Research – credibility, objectivity, reliability
- Increase knowledge & awareness of respective service streams
- Co-ownership & decision making



Critical Success Factors of the Initiative

- Time – Take the time to build and strengthen capacity
- Needs assessment using a reliable & validated evaluation tool
- Lions Quest SFA is in alignment with Ontario Education Curriculum & consistent with current MOE initiatives
- Inter-dependency – geographical and demographic realities of Northern Ontario cultivates partnerships

Critical Success Factors of the Initiative

- Innovation within defined parameters
- Dedicate a portion of funds to be used for evaluation
- Provide training, support and implementation monitoring to ensure effectiveness and consistency for all phases of project



Next Steps

- Continuation/expansion of Lions Quest SFA in 2008/9 school year.
- Implementation of CTC Youth Survey in October-November 2008.
- Seek funding to support ongoing evaluation of Lions Quest initiative.
- Long-term planning for program sustainability and ongoing evaluation.



**Questions,
Comments**

Contact Us...

Josée Bélanger, Program Manager
Child & Family Services of Timmins & District
(705) 360-7100 ext. 5130
Josee.Belanger@timminschildfamily.org

Rada Deletic, Data Analysis Coordinator
Child & Family Services of Timmins & District
(705) 360-7100 ext. 5400
Rada.Deletic@timminschildfamily.org