

Evolution of Collaboration



System Change with CAS, CMH,
Wraparound and CTN



CHILDREN'S AID
SOCIETY
of SIMCOE COUNTY



Kinark
CHILD AND FAMILY SERVICES
CARING • HELPING • HEALING



-
- Linking Child Welfare
 - Wraparound
 - Residential Response Logic Model
 - Memorandum of Understanding with Kinark and CAS
 - Single Plan of Care Feasibility Study



Linking Child Welfare

- February 2006
 - MCYS introduced a Policy Framework for Communities.
- Spring 2006
 - Task group of the Planning Table of the Coalition met with CAS, and our Aboriginal community to review a series of statistical reports.
- A Wraparound coordinated approach to working with children/youth and families was recommended as a primary program.

- July 06

Catulpa was identified as the service provider. 2 mainstream and 1 Aboriginal facilitator would be hired

- September 06

Approval at the Planning Table of the Coalition

Anticipated Outcomes

- Increased number of families linked to accessing services
- Reduction in the average number of moves for children in care
- Reduction of children/youth in OPRs



The WrapAround Process

- WrapAround is a proven innovative and measurable approach of reaching out to families who have complex needs to help them find solution
- Solutions are chosen by the family based on their values, strengths, needs and culture
- WrapAround helps to build partnerships between families and communities

WrapAround Process

- WrapAround believes that people know what is best for them and what they need
- WrapAround believes there are strengths and gifts in the community that can help families
- Participation in the WrapAround process is completely voluntary
- Referrals for WrapAround come from the Children's Aid Society as well as Aboriginal Agencies of Simcoe County

Guiding Principles of WrapAround

- **Family Voice and Choice**
- **Team Based**
- **Natural Supports**
- **Collaboration**
- **Individualized**
- **Community Based**
- **Culturally Competent**
- **Strengths Based**
- **Persistence**
- **Outcome Based**

How is WrapAround Different

- The facilitator works within a team structure that guides the collaboration and consensus decision making, rather than coordinating services
- The plan is based on family/community strengths
- The family directs the plan
- The plans developed by the family are flexible



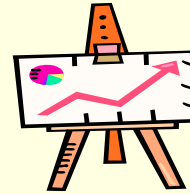
Residential Response Pilot

- Background/Context
- Planning Process
- Research Findings
- Logic Models
- Logic Model Components



Residential Response Background/Context

- Declining admissions



- Increasing complexity of clients in home, school and home community
- Reduce negative impact of “placement”
- Improve outcomes for children’s mental health/child welfare clients

Residential Response Planning Process

- Simcoe County's emerging system of care
- Planning process modeled after OACAS' Project Management Framework
- Project Definition that included timeframes, deliverables, broad stakeholder involvement, shared vision, research into EBP, etc.
- Monitoring/evaluation process to measure progress in implementation

Residential Response Research

Good outcomes for clients in residential care:

- **Supportive family involvement through treatment**
- **Importance of discharge and six months post discharge**
- **Quality of life in discharge placement**
 - Discharge placement is positive, stable and supportive
 - There is less stress and more social support in the family
 - There is comprehensive discharge planning
- **Easily available aftercare services**
- **Shorter lengths of stay**
- **Academic success – educational support before and after discharge**
- **Ecological philosophy**
- **Staff training and supervision is a priority**
- **Therapist-client relationship is valued and nurtured**

Residential Response Research

Techniques for creating a TA include:

- Communicating a sense of hope
- Noting client progress towards goals
- Understanding, accepting and respecting clients
- Being open-minded and enthusiastic
- Referring to common experiences
- Conveying a feeling of working together
- Communicating a trust in client's growing ability to use what has been learned in treatment
- Facilitating the use of healthy defenses and supportive activities.

Residential Response Research

Treatment providers who are effective at providing positive attention, praise, and supervision while minimizing criticism, and negative attention are most successful



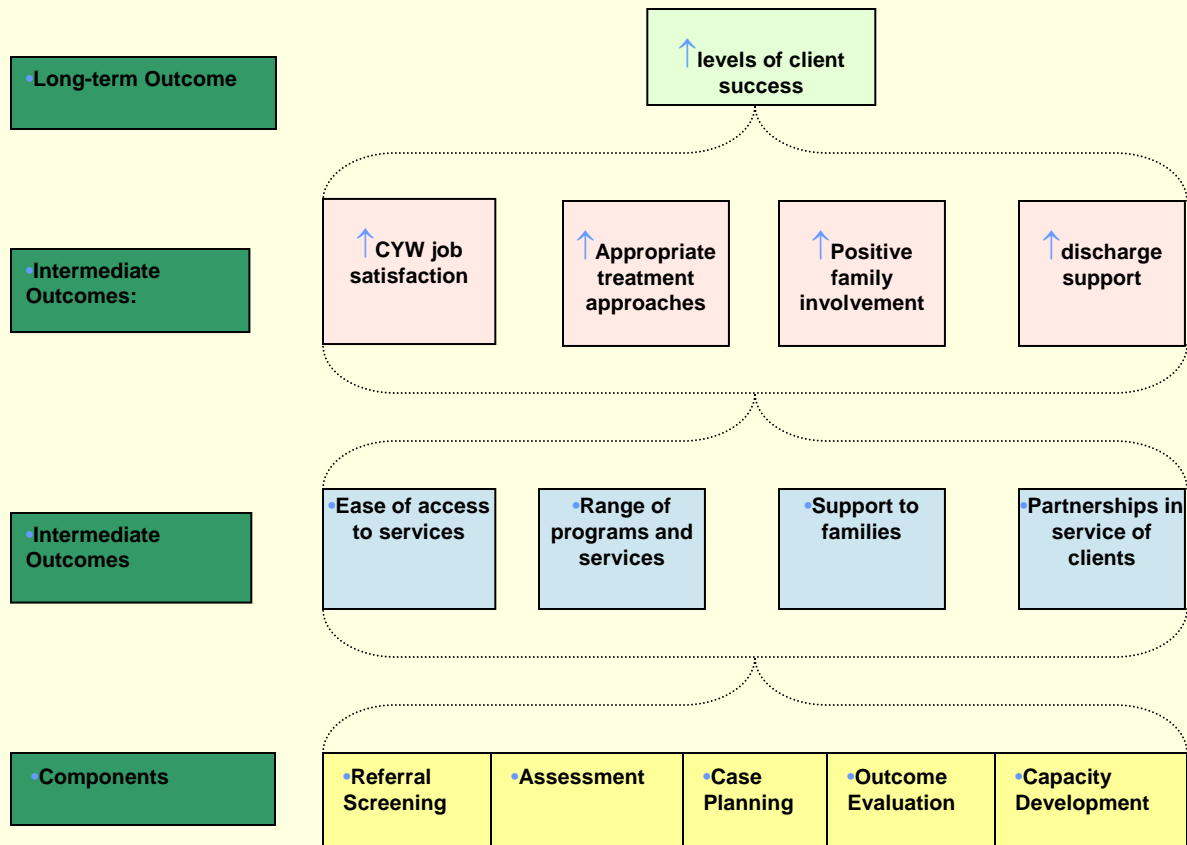
Residential Response Logic Model Components

Logic Model based on:

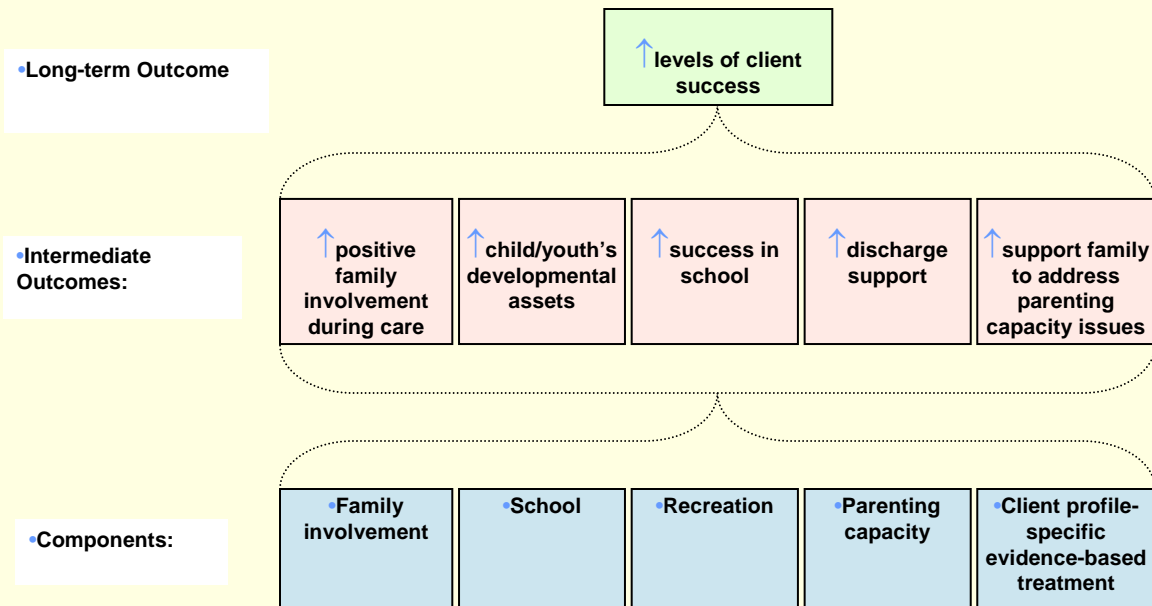
- Residential team vision session
- Project team vision session
- Review of research on evidence-based and promising practices



Residential Response Overall Logic Model



Residential Response Intervention Logic Model



Residential Response Logic Model Components

- Referral/screening
- Assessment
- Case planning (single plan of care)
- Interventions for:
 - Family involvement
 - Successful school engagement
 - Recreation
 - Services/supports for parental issues
 - Client profile specific EBT

Residential Response Logic Model Components

- Aftercare support
- Outcome evaluation
 - Implementation Plan Review
 - CYW Job Satisfaction Survey (handout)
- Capacity Development
 - Memorandum of Understanding – CAS, RVH, Catulpa, CMHA, police
 - Enhanced training for CYWs (FRIENDS, SNAP, Triple P (ConnXionz pilot being planned) Wraparound, Developmental Assets, Dual Diagnosis, effective responses to bullying)



Memorandum of Understanding

- Memorandum of Understanding between Kinark Child and Family Services, Children's Aid Society of Simcoe County and Wraparound

Intent

- To facilitate the use of Wraparound for clients of CAS and Simcoe Kinark
- To ensure that "shared" clients have a single plan of care
- To ensure that the child/youth needs to be served within a family and the community



Single Plan of Care

- Single Plan of Care to Support integrated services for children, youth and families in Simcoe County



Children's Treatment Network of Simcoe York (CTN)



- CTN developed tools and processes to support integrated working for children with multiple needs and their families
- Electronic record developed called singleplanofcare.com to support sharing of information
- September 2007- The Coalition decided to explore feasibility and readiness of expanded use by other Coalition members
- September 2008- Completion of Feasibility Study

Challenges



- Embed wraparound principles throughout the system of care
- Increase communication mechanisms to enhance planning and intervention
- Shared responsibility for children and youth across sectors
- Enhance partnerships with respect to quality of life in discharge planning
- Create a systemic community process that is flexible and responsive

Successes:



- Use of 'funnel' to ensure a balance of intervention/treatment with creating more caring, nurturing communities
- Building community capacity and collaboration
- Implementation of the Memorandum of Understanding
- Foundation for collaborative problem solving
- front line service providers engaged in planning and open to change
- Families expressing their voice, their choice and experiencing meaningful success

Next Steps:



Formalize community processes to:

- Maximize resources based on principles of effectiveness, equity and sufficiency
- Engage in creative problem solving recognizing these children and youth are the community's responsibility
- Complete the feasibility study of expanded use of single plan of care